



Dutchman Realty

Dee Bax

dee@dutchmanrealty.com

5055 Hwy N, Suite 215
Cottleville, MO 63304
C) 314.267.2664
O) 636.949.0777
dee@dutchmanrealty.com

**8967 Highway N
UNINCORPORATED**

Best use COMMERCIAL
current zoned residential



5.14+/- Ac

5055 Highway N Suite 215 Cottleville, MO 63304 | DutchmanRealty.com

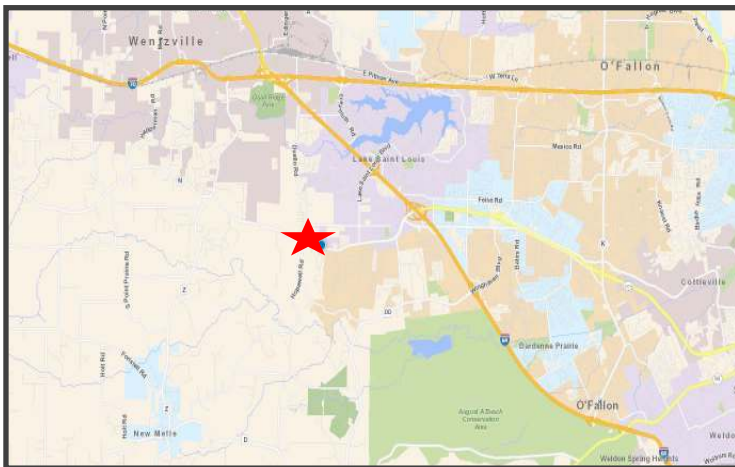
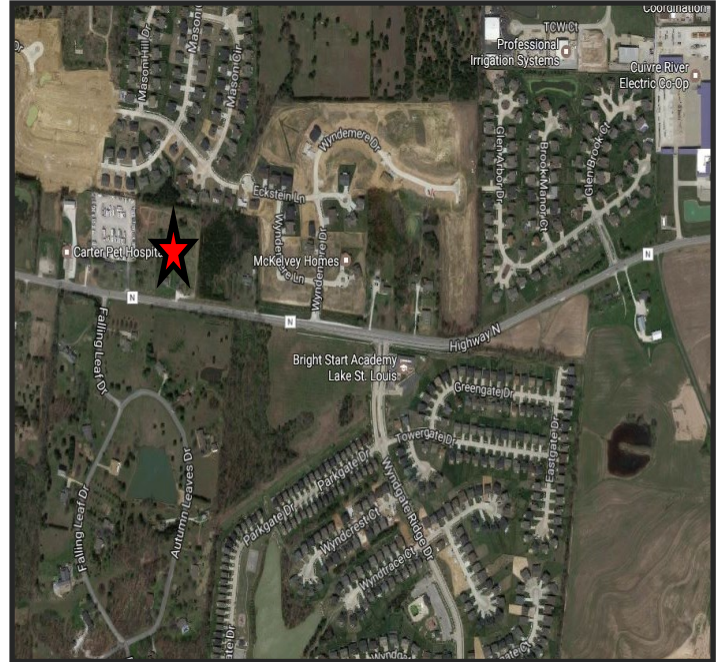
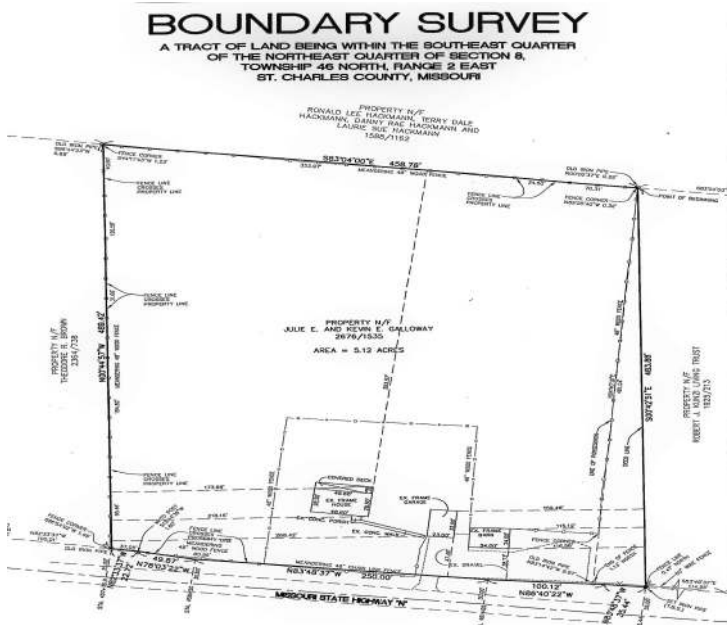
THIS INFORMATION IS THOUGHT TO BE ACCURATE. HOWEVER IT IS SUBJECT TO VERIFICATION AND NO LIABILITY FOR ERRORS OR OMISSIONS IS ASSUMED. THERE ARE NO WARRANTIES, EXPRESSED OR IMPLIED, AS TO THE INFORMATION HEREIN CONTAINED, AND IT IS RECOMMENDED THAT ALL BUYERS SHOULD MAKE A PERSONAL INSPECTION OF THE PROPERTY. THE LISTING MAY BE WITHDRAWN WITH OR WITHOUT NOTICE AND THE STATED



5055 Hwy N, Suite 215
Cottleville, MO 63304
C) 314.267.2664
O) 636.949.0777
dee@dutchmanrealty.com

**8967 Highway N
UNINCORPORATED
St. Charles County**

**\$4.24 Sq. Ft.
\$950,000 Total Price**



- 5.14 +/- Acres IN THE COUNTY
- Utilities available
- Currently Zoned Residential
- Hwy N Frontage
- Highest and Best Use:
 - * Retirement Center
 - * Apartments
 - * Outside Storage

Seller is selling "AS-IS". Seller makes no representations or warranties of any kind and buyer accepts the property in its "AS-IS" "WHERE-IS" condition with all faults.

5055 Highway N Suite 215 Cottleville, MO 63304 | DutchmanRealty.com

THIS INFORMATION IS THOUGHT TO BE ACCURATE. HOWEVER IT IS SUBJECT TO VERIFICATION AND NO LIABILITY FOR ERRORS OR OMISSIONS IS ASSUMED. THERE ARE NO WARRANTIES, EXPRESSED OR IMPLIED, AS TO THE INFORMATION HEREIN CONTAINED, AND IT IS RECOMMENDED THAT ALL BUYERS SHOULD MAKE A PERSONAL INSPECTION OF THE PROPERTY. THE LISTING MAY BE WITHDRAWN WITH OR WITHOUT NOTICE AND THE STATED PRICE IS SUBJECT TO CHANGE WITHOUT NOTICE OR APPROVAL. THE SELLER FURTHER RESERVES THE RIGHT TO REJECT ANY AND ALL OTHERS. ALL INQUIRIES, INSPECTIONS, APPOINTMENTS AND OFFERS MUST BE HANDLED BY DUTCHMAN REALTY, INC.