

FOR SALE
HIGHWAY Z & INTERSTATE DRIVE
 Wentzville, Missouri 63385



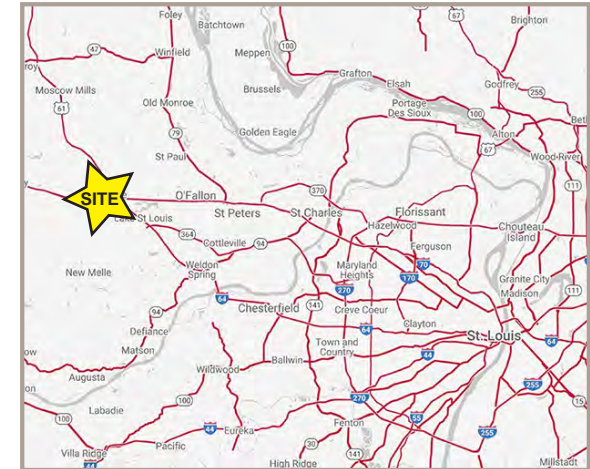
LAND AVAILABLE: 1.6 - 2.55 ACRES
SALE PRICE: \$17 - \$21/SF

PROPERTY DETAILS

- Developed lots available
- High growth area
- Easy Interstate access

POTENTIAL USES INCLUDE

- Service Retail/Restaurant, Grocery, Pharmacy, Entertainment, Medical, Office, Gas/Convenience, Financial Institution



CONTACT US FOR MORE INFORMATION



Rick Randall
 rrandall@paceproperties.com
 314.785.7641

Ryan Geringer
 rgeringer@paceproperties.com
 314.785.7642



Dee Bax
 dee@dutchmanrealty.com
 636.949.0777

1480 Woodstone Dr., Suite 209
 St. Charles, Missouri 63304
 dutchmanrealty.com

2018 DEMOGRAPHICS

	3 MILE	5 MILE	7 MILE
POPULATION	38,078	68,289	100,766
EMPLOYEES	15,061	23,047	31,212
MEDIAN HH INCOME	\$86,230	\$89,856	\$90,150

PACEPROPERTIES.COM
 1401 South Brentwood Blvd., Suite 900
 St. Louis, Missouri 63144
 P: 314.968.9898

A MEMBER OF
CHAINLINKS
 RETAIL ADVISORS

The information contained herein is not warranted, although it has been obtained from the owner/landlord of the subject property or from other sources that Pace Properties, Inc. deems reliable, and is subject to change without notice. Owner/landlord and Pace Properties, Inc. make no representations as to the environmental condition of the subject property and recommend tenant's independent investigation.

FOR SALE
HIGHWAY Z & INTERSTATE DRIVE
Wentzville, Missouri 63385

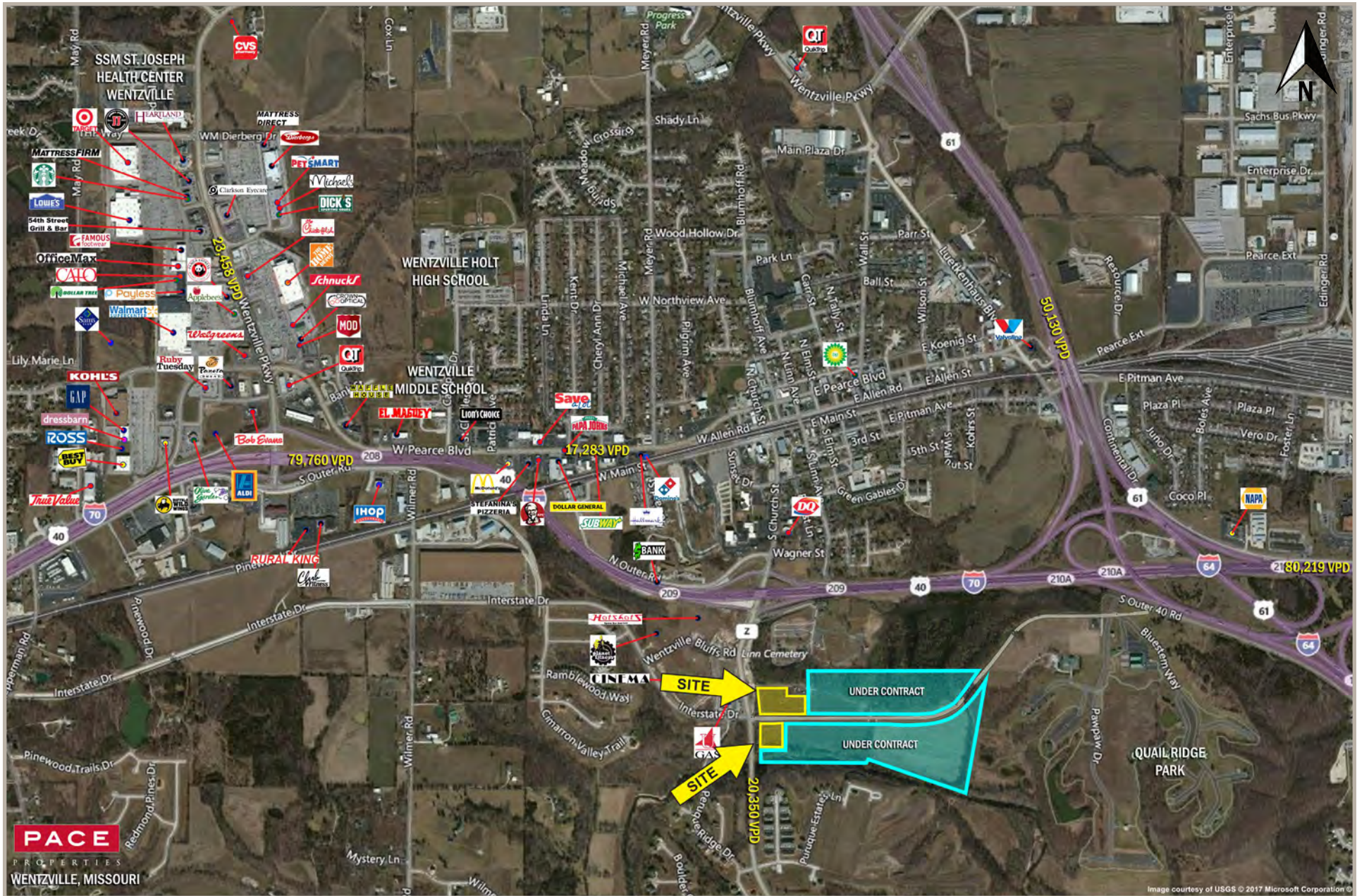


Image courtesy of USGS © 2017 Microsoft Corporation

FOR SALE
HIGHWAY Z & INTERSTATE DRIVE
 Wentzville, Missouri 63385



LOT	ACRES	RATE/SF
A	2.5	\$21/SF
B	1.6	\$17.00
C	2.05	\$19.00