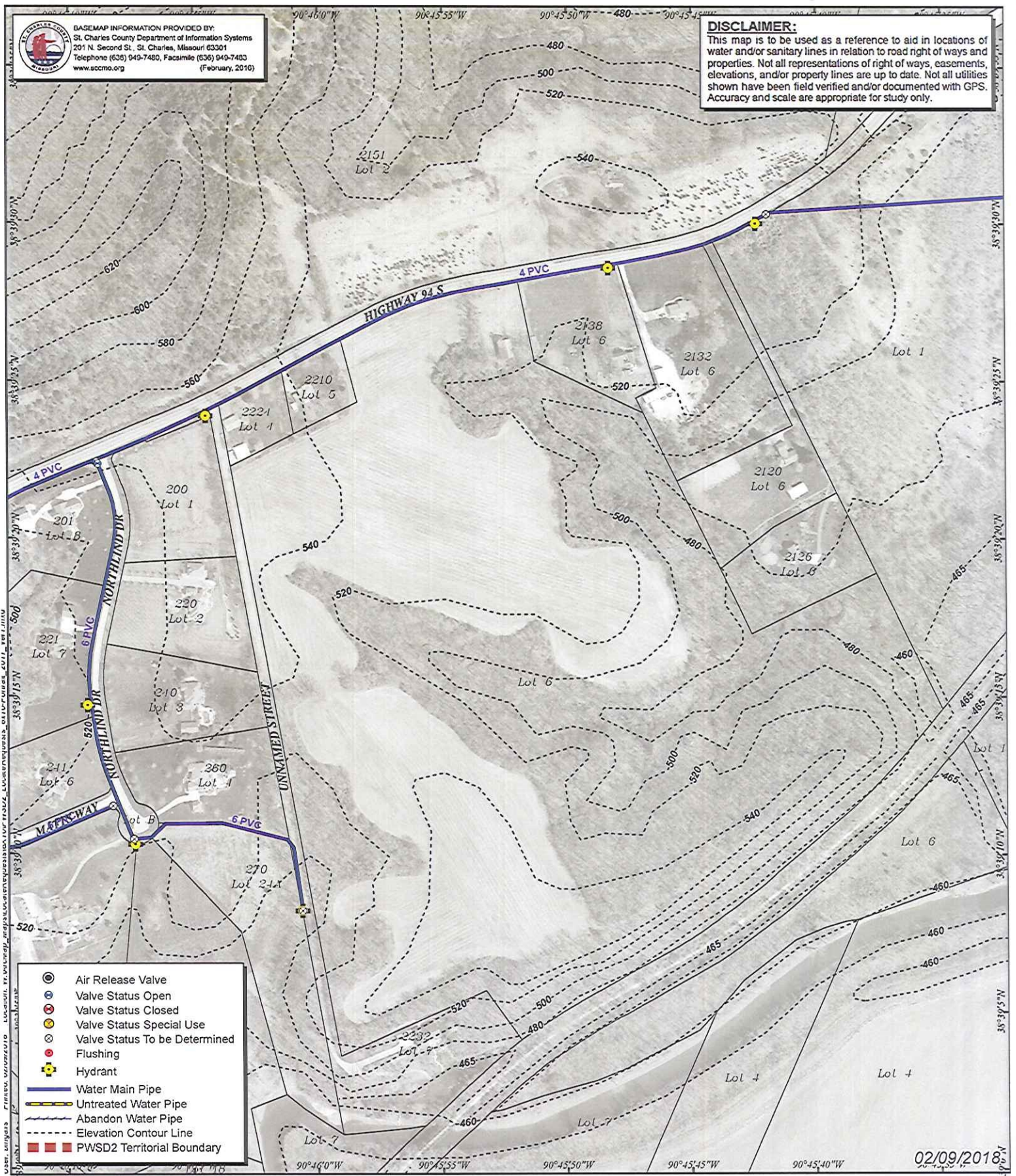


BASEMAP INFORMATION PROVIDED BY:  
 St. Charles County Department of Information Systems  
 201 N. Second St., St. Charles, Missouri 63301  
 Telephone (636) 949-7480, Facsimile (636) 949-7483  
 www.sccmo.org (February, 2016)

**DISCLAIMER:**  
 This map is to be used as a reference to aid in locations of water and/or sanitary lines in relation to road right of ways and properties. Not all representations of right of ways, easements, elevations, and/or property lines are up to date. Not all utilities shown have been field verified and/or documented with GPS. Accuracy and scale are appropriate for study only.



- Air Release Valve
- Valve Status Open
- Valve Status Closed
- Valve Status Special Use
- Valve Status To be Determined
- Flushing
- Hydrant
- Water Main Pipe
- Untreated Water Pipe
- Abandon Water Pipe
- Elevation Contour Line
- PWSD2 Territorial Boundary

02/09/2018



**Public Water Supply District No. 2**  
 of St. Charles County, MO  
 Providing and Protecting our Most Precious Resource

Purpose: Utility Locations  
 Prepared for: BAX Engineering  
 Attention: Jason Skidmore  
 Location: Highway 94

