

**FOR SALE**  
**Highway W & I-70**  
Foristell, MO 63348



Dutchman Realty

**LAND AVAILABLE: 192.25 +- AC**

**SALE PRICE:**

Parcel A = \$40,000/AC

Parcel B = \$50,000/AC

Parcel C = \$3/SF

### PROPERTY DETAILS

- Wentzville School District
- Public water and sewer onsite
- Great I-70 visibility and access
- Uses: Industrial/Mixed Use

### COMMENTS

- Possible Lift Station needed on East side of Highway W
- 9 Acres in City of Foristell, Zoned R-1 (3 Acre Lots)



Dutchman Realty

Dee Bax

DutchmanRealty.com

[dee@dutchmanrealty.com](mailto:dee@dutchmanrealty.com)

636.949.0777

1480 Woodstone Dr, Suite 209

St. Charles, MO 63304

Foristell, MO



POPULATION

**783**



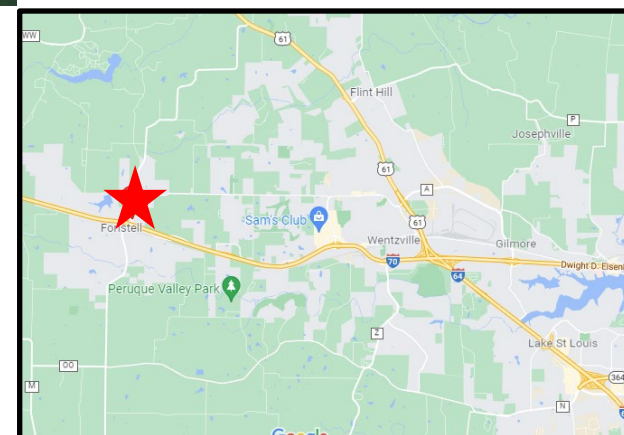
MEDIAN HOME PRICE

**\$342,000**



MEDIAN INCOME

**\$77,316**

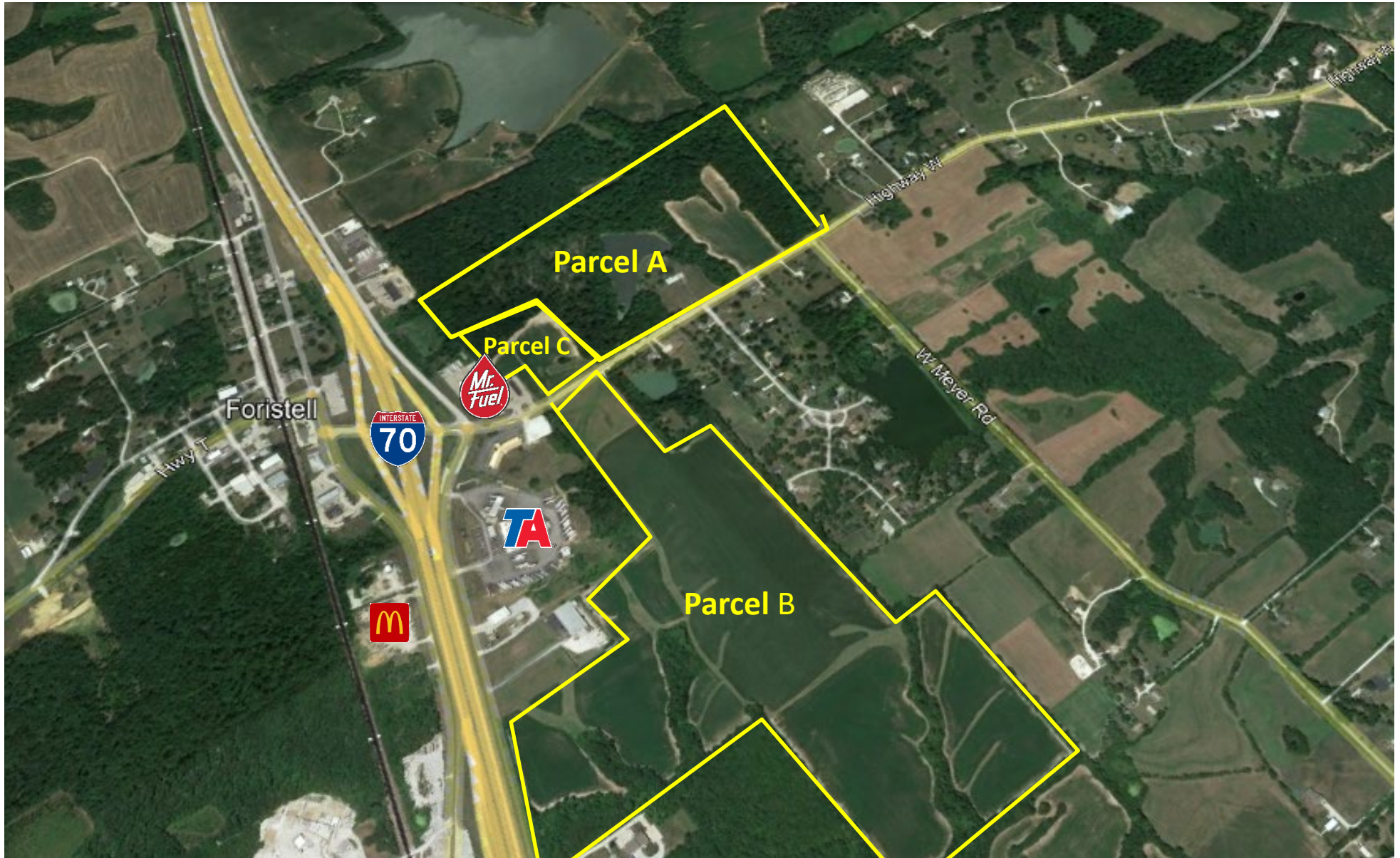




**FOR SALE**  
**Highway W & I-70**  
Foristell, MO 63348



Dutchman Realty



This information is subject to verification and no liability for errors or omissions is assumed. The listing may be withdrawn with or without notice and the stated price is subject to change without notice or approval. All inquiries, inspections, appointments and offers must be handled by Dutchman Realty, Inc. Seller makes no representations or warranties, expressed or implied. The Seller further reserves the right to reject any and all offers. Seller offers the property in its "AS-IS" "WHERE-IS" condition with all faults.



**FOR SALE**  
**Highway W & I-70**  
Foristell, MO 63348



Dutchman Realty

