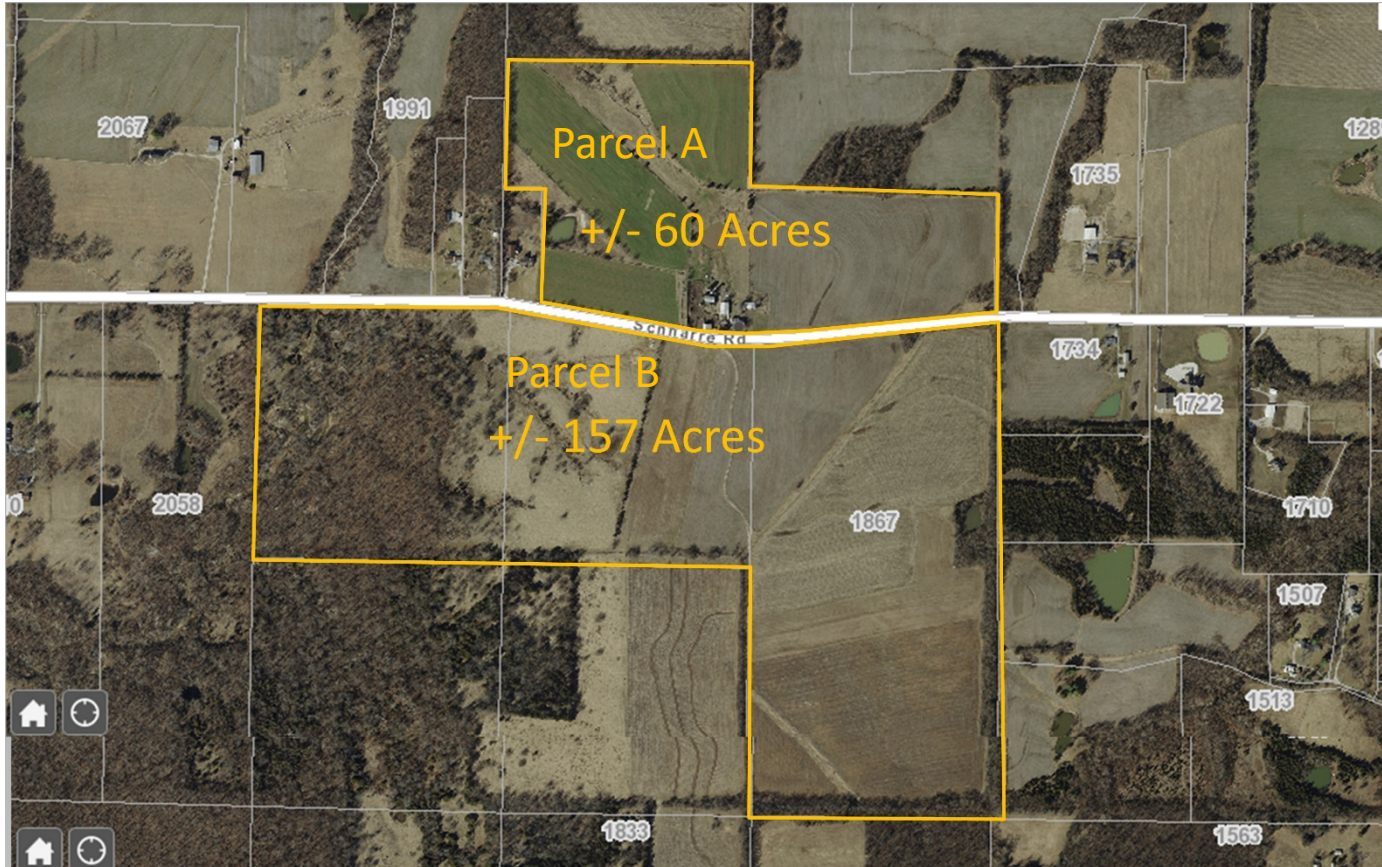


FOR SALE
1867 Schnarre Rd
Foristell, MO 63348



LAND AVAILABLE: 217 +/- ACRES

Parcel A +/- 60 Acres

Parcel B +/- 157 Acres

SALE PRICE: \$25,000/Acre

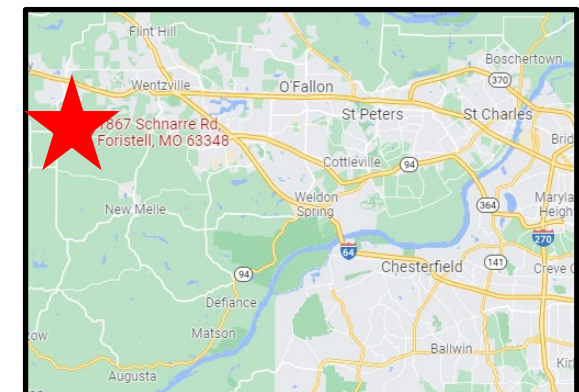
PROPERTY DETAILS

- Unincorporated St Charles County
- Tenant month-to-month
- Wentzville School District
- Public water available to East (4500 +/- Feet)
- Parcel B: 13.5 +/- acres in flood plain

COMMENTS

Zoned: 1-4 Units Residential

Best use: 3 Acre Residential Lots



Dutchman Realty
Dee Bax
DutchmanRealty.com
dee@dutchmanrealty.com
636.949.0777
1480 Woodstone Dr, Suite 209
St. Charles, MO 63304

St. Charles, MO

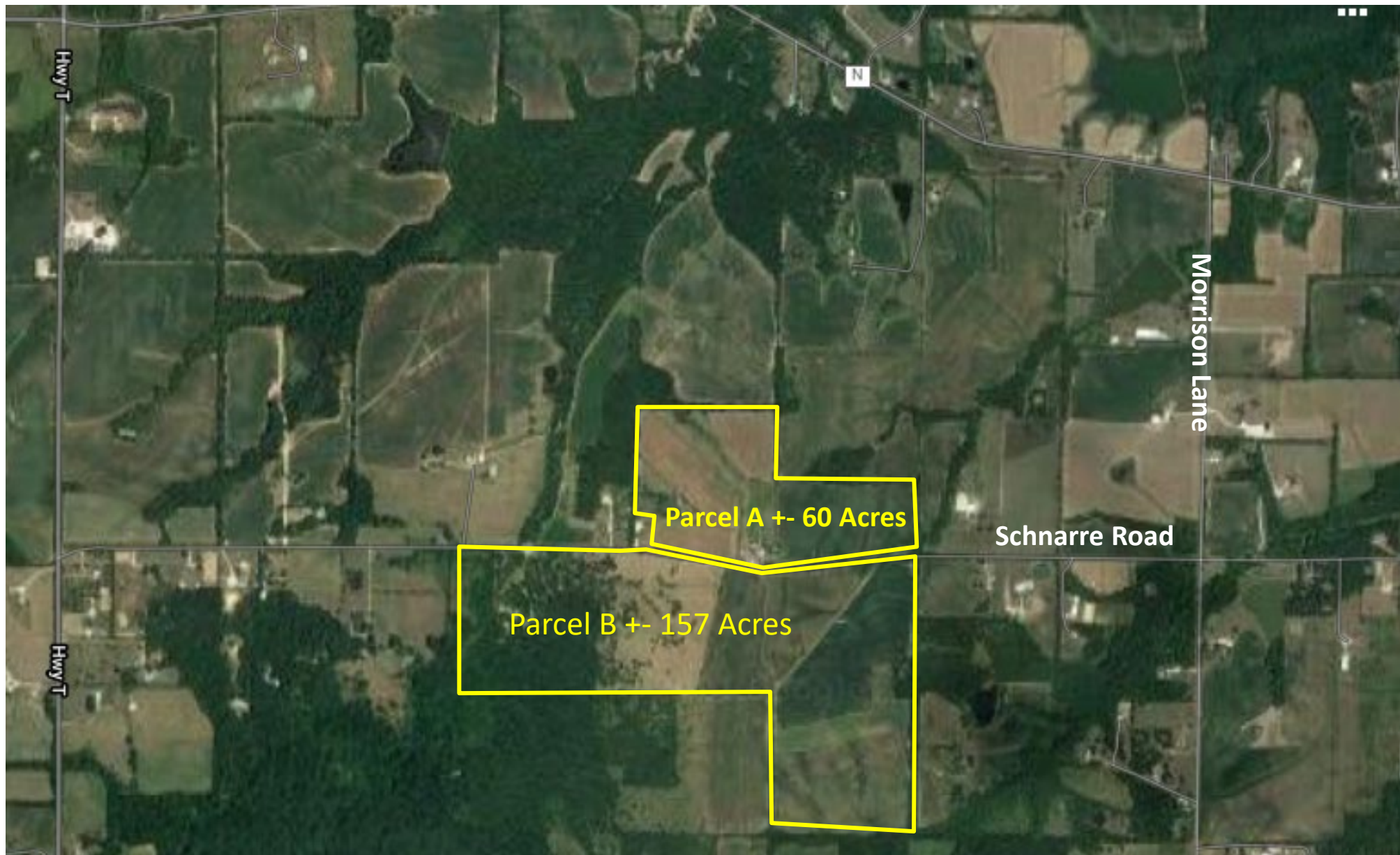


POPULATION	70,0171
MEDIAN HOME PRICE	\$231,133
MEDIAN INCOME	\$84,978

FOR SALE
1867 Schnarre Rd
Foristell, MO 63348



Dutchman Realty



This information is subject to verification and no liability for errors or omissions is assumed. The listing may be withdrawn with or without notice and the stated price is subject to change without notice or approval. All inquiries, inspections, appointments and offers must be handled by Dutchman Realty, Inc. Seller makes no representations or warranties, expressed or implied. The Seller further reserves the right to reject any and all offers. Seller offers the property in its "AS-IS" "WHERE-IS" condition with all faults.